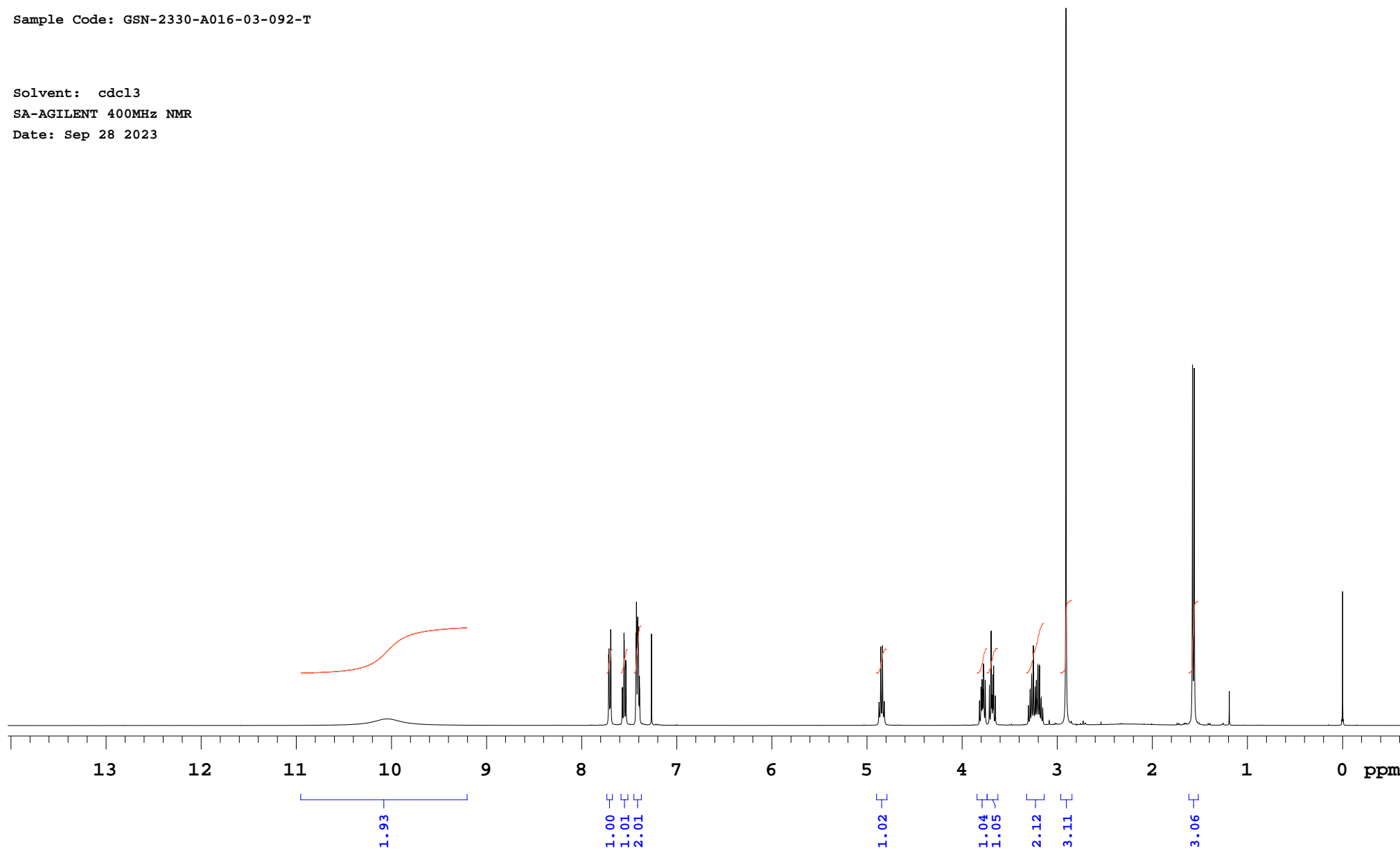


Sample Code: GSN-2330-A016-03-092-T

Solvent: cdcl3

SA-AGILENT 400MHz NMR

Date: Sep 28 2023



Plotname: GSN-2330-A016-03-092-T_PROTON_20230928_01_plot01

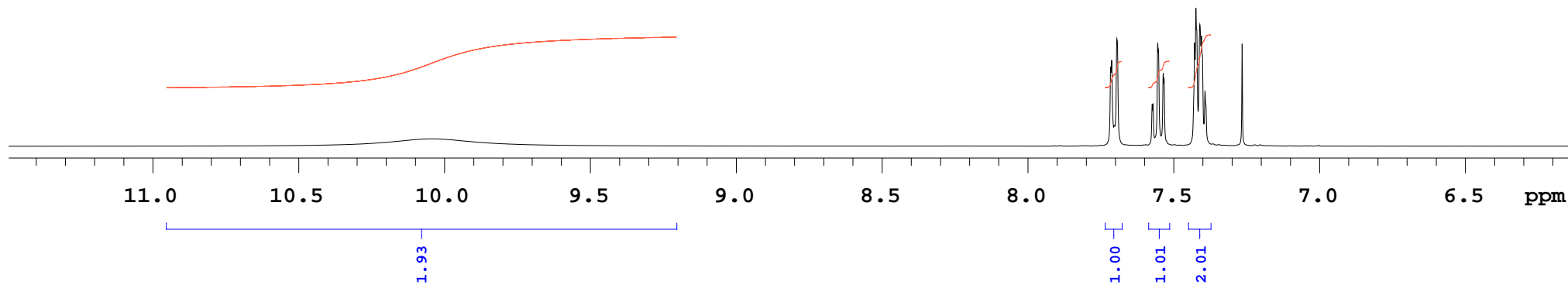
Sample Code: GSN-2330-A016-03-092-T

Solvent: cdcl3

SA-AGILENT 400MHz NMR

Date: Sep 28 2023

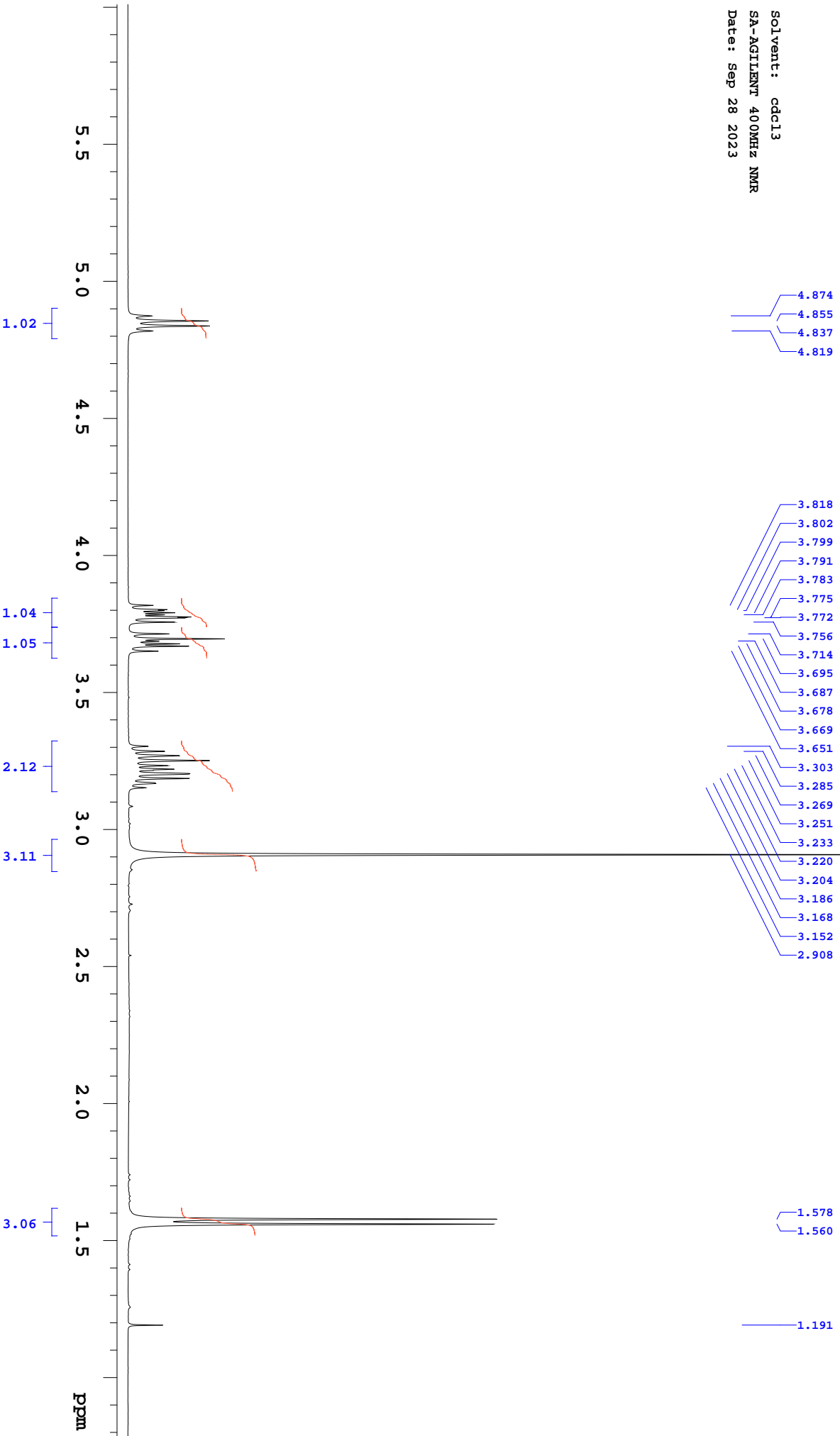
7.717
7.713
7.704
7.695
7.574
7.571
7.555
7.553
7.536
7.534
7.428
7.424
7.411
7.405
7.393
7.266



Plotname: GSN-2330-A016-03-092-T_PROTON_20230928_01_plot02

Sample Code: GSN-2330-A016-03-092-T

Solvent: cdcl3
SA-AGILENT 400MHz NMR
Date: Sep 28 2023



Plotname: GSN-2330-A016-03-092-T_PROTON_20230928_01_Plot03

expl PROTON

SAMPLE PRESATURATION
date Sep 28 2023 satmode n
solvent cdcl3 wet n
file /home/agilent~ SPECIAL
/data/2023/Sep/GSN~ temp not used
-2330-A016-03-092-- gain 46
T_20230928_01/GSN-- spin 20
2330-A016-03-092-T- hst 0.008
_PROTON_20230928_0~ pw90 12.700
 1.fid alfa 10.000
ACQUISITION FLAGS
sw 8012.8 il n
at 4.089 in n
np 65536 dp y
fb 4000 hs nn
bs 2 PROCESSING
d1 1.000 lb 0.50
nt 128 fn not used
ct 30 DISPLAY
TRANSMITTER sp -798.9
tn H1 wp 8012.6
sfrq 399.828 rfl 799.1
tof 1199.5 rfp 0
tpwr 60 rp -134.2
pw 6.350 lp 0
DECOUPLER PLOT
dn C13 wc 268
dof 0 sc 0
dm nnn vs 43
decwave W40_ATB-89~ th 3
 85 ai ph
dpwr 38
dmf 29412

INDEX	FREQUENCY	PPM	HEIGHT	INDEX	FREQUENCY	PPM	HEIGHT
1	3085.3	7.717	13.6	33	1466.9	3.669	11.4
2	3083.8	7.713	14.7	34	1459.6	3.651	5.7
3	3080.1	7.704	3.6	35	1320.7	3.303	3.8
4	3076.7	7.695	18.3	36	1313.4	3.285	6.9
5	3028.3	7.574	7.2	37	1307.0	3.269	9.6
6	3027.1	7.571	7.3	38	1299.9	3.251	15.3
7	3020.7	7.555	17.7	39	1292.6	3.233	7.4
8	3019.7	7.553	16.3	40	1287.5	3.220	8.7
9	3013.1	7.536	12.5	41	1280.9	3.204	11.6
10	3012.1	7.534	11.7	42	1274.0	3.186	11.4
11	2970.1	7.428	17.7	43	1266.7	3.168	5.2
12	2968.4	7.424	23.6	44	1260.3	3.152	3.4
13	2963.0	7.411	20.8	45	1162.7	2.908	146.7
14	2960.8	7.405	18.9	46	630.9	1.578	68.8
15	2955.9	7.393	9.5	47	623.8	1.560	68.2
16	2905.0	7.266	17.5	48	476.3	1.191	6.5
17	1948.7	4.874	4.5	49	-0.0	-0.000	25.6
18	1941.3	4.855	15.1				
19	1934.0	4.837	15.3				
20	1926.7	4.819	4.6				
21	1526.4	3.818	4.8				
22	1520.3	3.802	7.4				
23	1518.8	3.799	6.8				
24	1515.6	3.791	8.8				
25	1512.7	3.783	6.9				
26	1509.5	3.775	11.8				
27	1508.3	3.772	10.7				
28	1501.9	3.756	8.7				
29	1484.8	3.714	7.7				
30	1477.5	3.695	18.1				
31	1474.3	3.687	5.8				
32	1470.4	3.678	9.7				