

Analytical Report

Sample ID	1256 - Analysis Service - A0203
Expected	Nitromethaqualone
Sample adulterated or impure?	No
Sample Appearance	
Sample type	#N/A -
Date of sample receipt	10-Jun-2024
Date of analysis	17-Jun-2024
Date of Report	18-Jun-2024

Qualitative and Quantitative Results

Substances identified

Substances identified	Harm Reduction information	Chemical Class	Pubchem ID	Analytical techniques used
Nitromethaqualone 95%		Other	63339	FTIR/LCMS/NMR

* uncertainty of measurement +/- 5 %

***The Analysis Report is not a warranty or advertisement for the quality of any supplier or product!
We do not claim nor make any guarantees or recommendations regarding the safety of the analysed samples for human consumption.***

Kykeon Analytics Ltd. assumes no liability for the results or for any damages that may arise from the use of the Analysis Report. The Analysis Report is not to be used for defence purposes in any type of proceeding without the explicit consent of KYKEON, its contents shall not be disclosed to any third party for marketing purposes. The Analysis Report shall not be altered, modified, amended, falsified, forged or changed in any way.



Detailed information regarding our workflow including a full description of the analytical methods applied is freely available under <https://www.kykeonanalytics.com/services/users/>

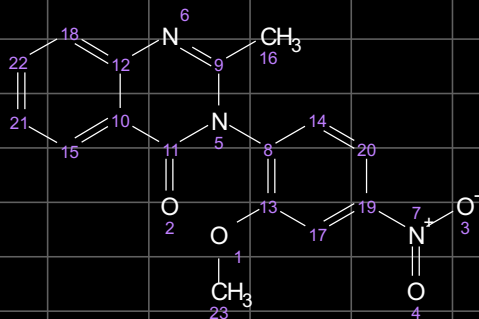
Attachments:



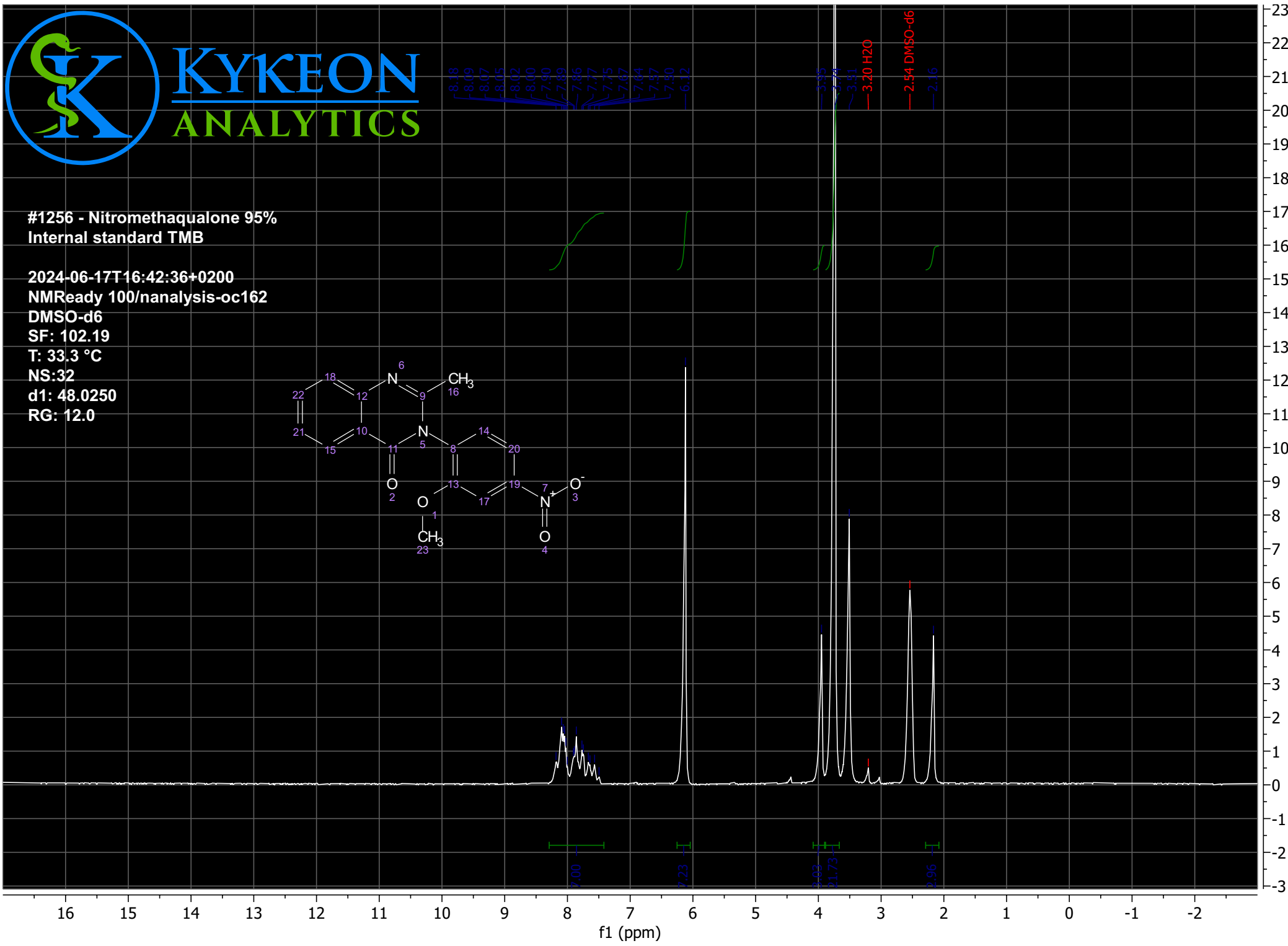
KYKEON
ANALYTICS

#1256 - Nitromethaqualone 95%
Internal standard TMB

2024-06-17T16:42:36+0200
NMRReady 100/nanalysis-oc162
DMSO-d6
SF: 102.19
T: 33.3 °C
NS:32
d1: 48.0250
RG: 12.0



8.18
8.09
8.07
8.05
8.02
8.00
7.90
7.89
7.86
7.77
7.75
7.67
7.64
7.57
7.50
6.12
3.85
3.81
3.20 H2O
2.54 DMSO-d6
2.16



f1 (ppm)

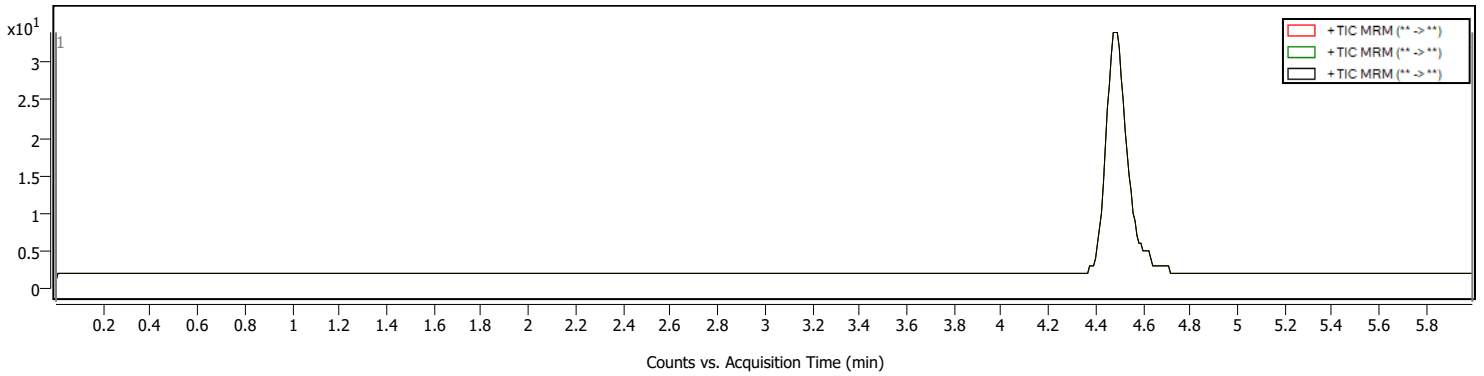
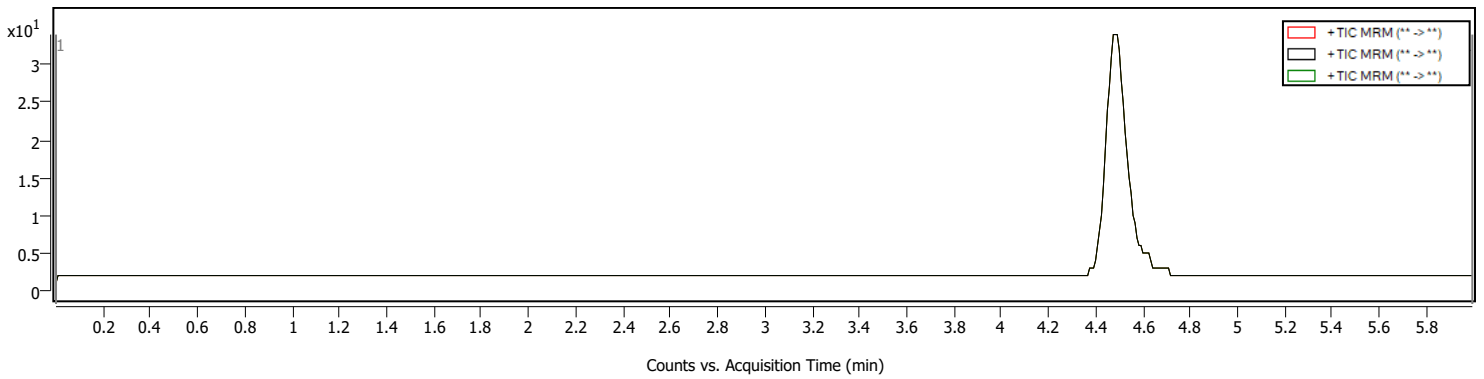
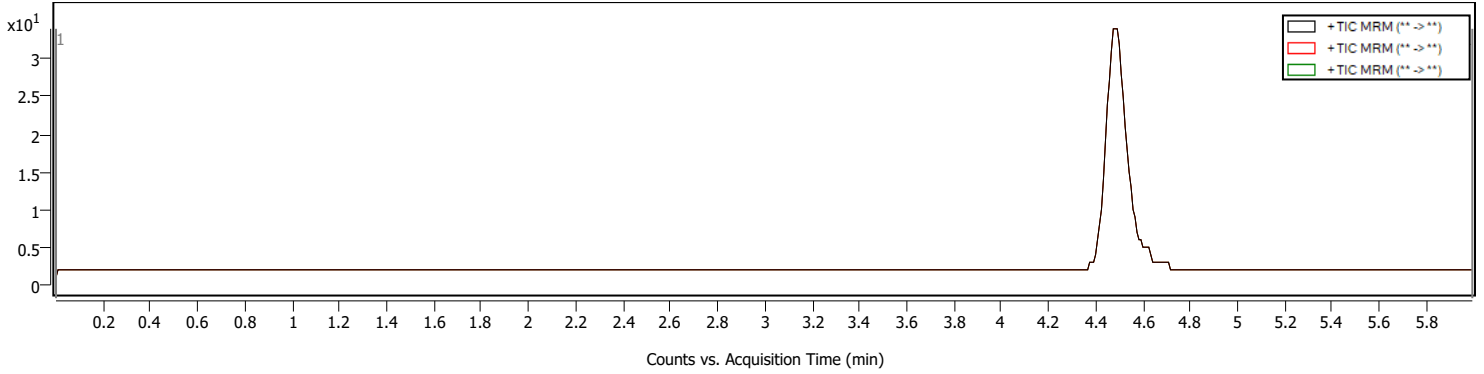
Qualitative Analysis Report



Sample Information

Name	1256_Nitromethaqualone	Data File Path	D:\Kykeon\Data\2024\06-13\1256_Nitromethaqualone_MRM.d
Sample ID		Acq. Time (Local)	6/14/2024 9:27:49 AM (UTC+02:00)
Instrument	Instrument 1	Method Path (Acq)	D:\Kykeon\methods\substances\Nitromethaqualone.m
MS Type	QQQ	Version (Acq SW)	Ultivo LC/TQ C.01.00 (B1677.1 SR1)
Inj. Vol. (ul)	1	IRM Status	
Position	P2-A1	Method Path (DA)	D:\Kykeon\methods\ReportWorkflowMethod-MRM.m
Operator		Result Summary	1 qualified (1 targets)

Sample Chromatograms



Compound Summary

Cpd	Name	Formula	Mass	RT	Area	m/z	Algorithm
1	Nitromethaqualone			4.487	162	312.0	MRM

Qualitative Analysis Report

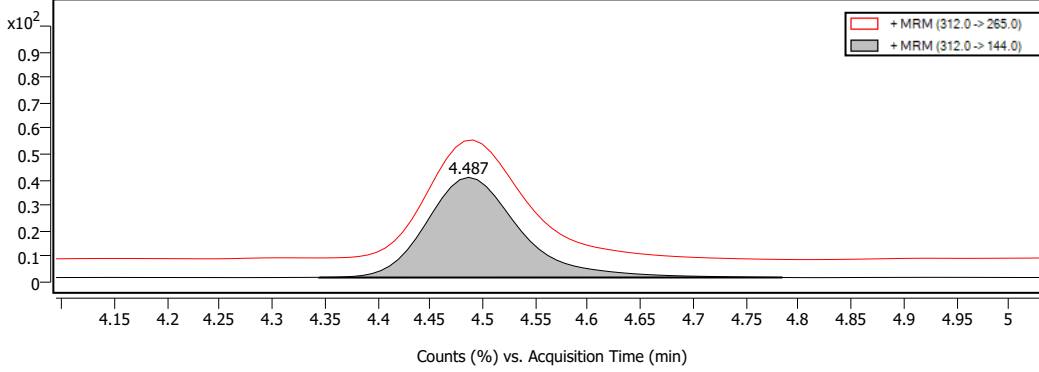


Compound Details

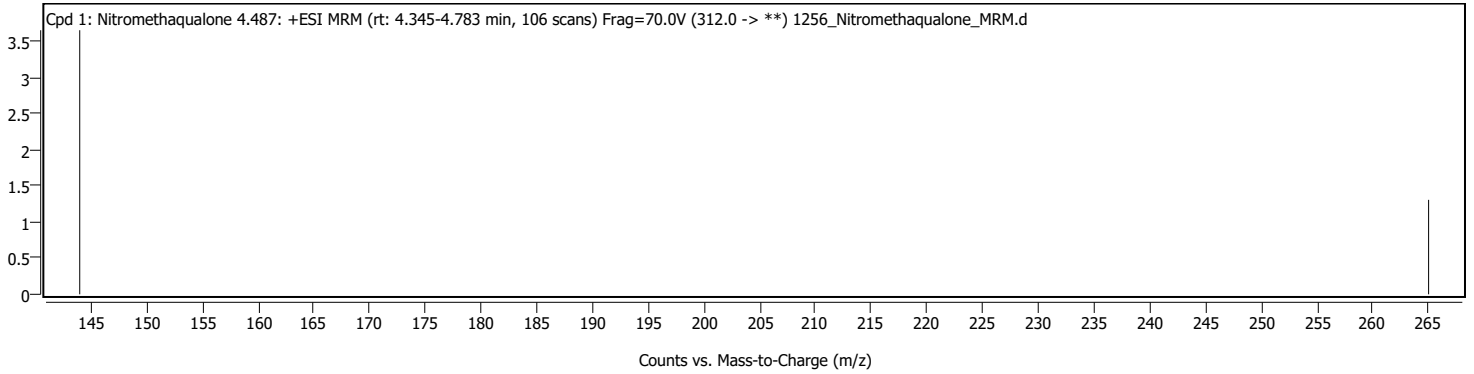
Cpd. 1: Nitromethaqualone

Name	Formula	Mass	RT	Area	m/z	m/z (primary prod.)	CE	FV	Algorithm
Nitromethaqualone			4.487	162	312.0	144.0	20.00		MRM

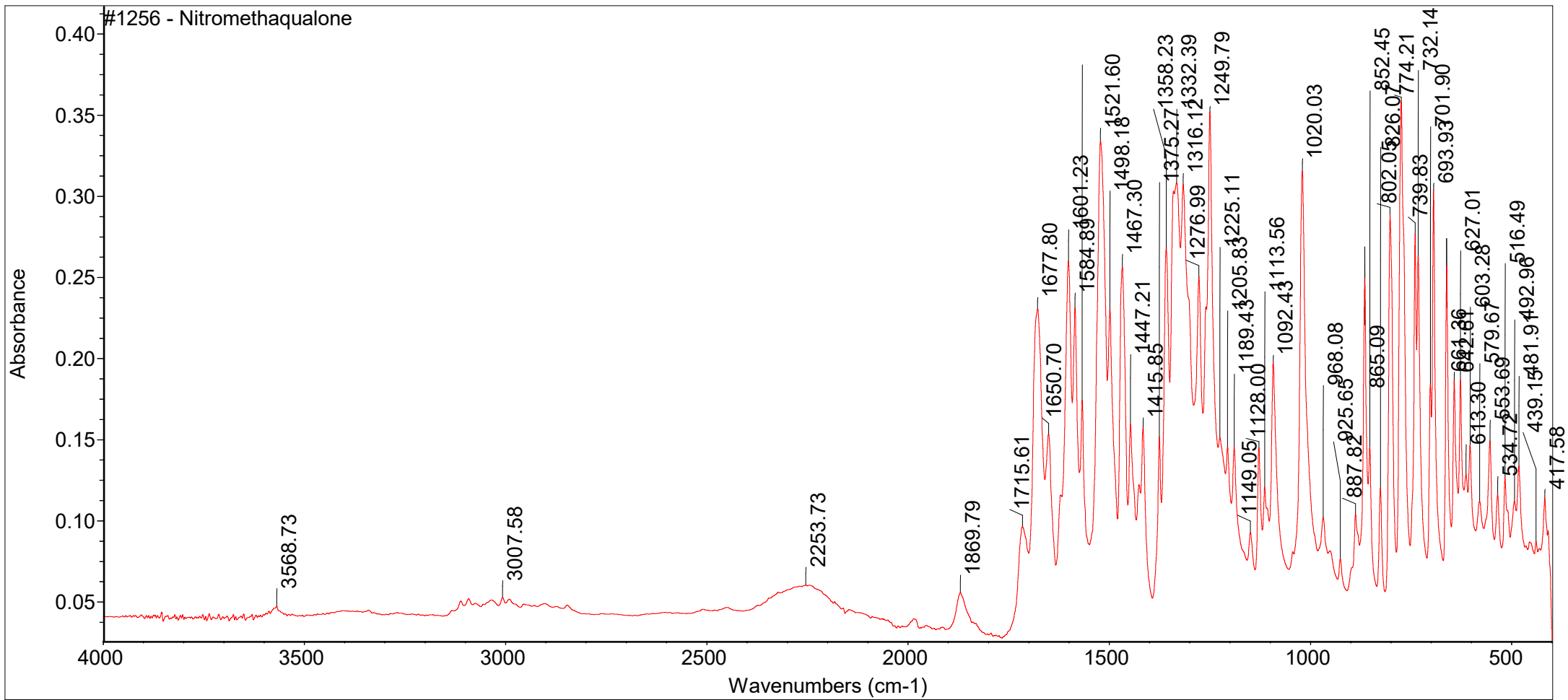
Compound Chromatograms (overlaid)



MS/MS Spectra



MassHunter Qual 10.0
(End of Report)



Tue Jun 11 15:28:31 2024 (GMT+02:00)

FIND PEAKS:

Spectrum: #1256 - Nitromethaqualone

Region: 4000.00 400.00

Absolute threshold: 0.047

Sensitivity: 65

Peak list:

Position:	417.58	Intensity:	0.114
Position:	439.15	Intensity:	0.0871
Position:	481.91	Intensity:	0.134
Position:	492.96	Intensity:	0.112
Position:	516.49	Intensity:	0.127
Position:	534.72	Intensity:	0.116
Position:	553.69	Intensity:	0.149

Position:	579.67	Intensity:	0.112
Position:	603.28	Intensity:	0.147
Position:	613.30	Intensity:	0.128
Position:	627.01	Intensity:	0.187
Position:	642.61	Intensity:	0.186
Position:	661.36	Intensity:	0.257
Position:	693.93	Intensity:	0.304
Position:	701.90	Intensity:	0.184
Position:	732.14	Intensity:	0.263
Position:	739.83	Intensity:	0.278
Position:	774.21	Intensity:	0.359
Position:	802.05	Intensity:	0.289
Position:	826.07	Intensity:	0.120
Position:	852.45	Intensity:	0.145
Position:	865.09	Intensity:	0.250
Position:	887.82	Intensity:	0.104
Position:	925.65	Intensity:	0.0768
Position:	968.08	Intensity:	0.102
Position:	1020.03	Intensity:	0.315
Position:	1092.43	Intensity:	0.197
Position:	1113.56	Intensity:	0.121
Position:	1128.00	Intensity:	0.145
Position:	1149.05	Intensity:	0.0927
Position:	1189.43	Intensity:	0.145
Position:	1205.83	Intensity:	0.145
Position:	1225.11	Intensity:	0.151
Position:	1249.79	Intensity:	0.352
Position:	1276.99	Intensity:	0.250
Position:	1316.12	Intensity:	0.307
Position:	1332.39	Intensity:	0.308
Position:	1358.23	Intensity:	0.268
Position:	1375.27	Intensity:	0.152
Position:	1415.85	Intensity:	0.157
Position:	1447.21	Intensity:	0.160
Position:	1467.30	Intensity:	0.256
Position:	1498.18	Intensity:	0.230
Position:	1521.60	Intensity:	0.334
Position:	1567.15	Intensity:	0.174
Position:	1584.89	Intensity:	0.231
Position:	1601.23	Intensity:	0.260
Position:	1650.70	Intensity:	0.153
Position:	1677.80	Intensity:	0.230
Position:	1715.61	Intensity:	0.0964
Position:	1869.79	Intensity:	0.0556
Position:	2253.73	Intensity:	0.0603
Position:	3007.58	Intensity:	0.0527

Position: 3568.73 Intensity: 0.0473